



1. Identification

Catalogue Number

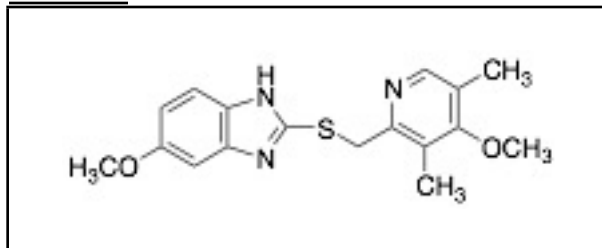
O635020

Lot Number

22-ZEA-32-1

Product Name

Omeprazole Sulfide

Structure**Synonyms**

6-Methoxy-2-[[[(4-methoxy-3,5-dimethyl-2-pyridinyl)methyl]thio]-1H-benzimidazole; 2-[[[(3,5-Dimethyl-4-methoxy-2-pyridyl)methyl]thio]-5-methoxybenzimidazole;

CAS Number

73590-85-9

Solubility

DMSO (Slightly), Methanol (Slightly)

Shipping Condition

This Product Is Stable To Be Shipped At Room Temperature

Molecular Formula $C_{17}H_{19}N_3O_2S$ **Source of Product**

N/A

Long Term Storage Conditions

-20°C

Molecular Weight

329.42

Purity

>95%

2. Warnings

Not Determined

3. Analytical Information

Tests

Appearance

Specifications

White to Pale Brown Solid

Results

Pale Beige to Pale Brown Solid

NMR

Conforms to Structure

Conforms

HPLC Purity

>95%

99.78% (205 nm)

MS

Conforms to Structure

Conforms

Additional Information

N/A

Purity is based on the analytical results of the tests performed. NMR and Elemental Analysis (if available) may have an accuracy of $\pm 2\%$. Isotopic purity is based on mass distribution observed.
The contents of the specifications are subject to change without advance notice, and the specification values displayed here are the most up to date values.

4. Signatures

Reviewed by

Nicole Yip

Product Quality Specialist

Reviewed by

Toni Rantanen

Manager, Quality Assurance

C of A Approved by

Chanell Chu

Quality Assurance Associate

Test Date

6/10/2025

Retest Date

6/8/2029